



Rotary Screw Compressors

R-Series 4-11 kW (5-15 hp)
Fixed and Variable Speed Drives

Compact Performance Where You Need It

The reliable Ingersoll Rand R-Series 4-11 kW compressor extends the R-Series family into the commercial machine range as well as offers innovative features and a compact design that fits virtually any application environment.



Fit-Anywhere Footprint

The vertically-stacked internal components reduce the base-plate compressor footprint by 20%, compared to previous models.

A Legacy of Engineered Reliability

Ingersoll Rand has taken the best features from the current R-Series family to deliver the same great performance in the 4-11 kW range. Improved innovations such as leak-free PTFE hoses with O-ring face seals, a next-generation airend, and a reduced number of components continues our legacy of reliability.

Convenient, Programmable Control

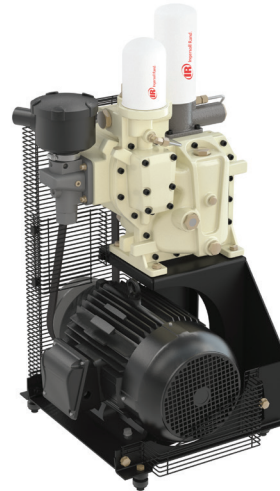
Ingersoll Rand Xe Series controllers deliver increased control functionality through an intuitive user interface with large navigation buttons for both fixed and variable speed drives.



The Xe-50 (fixed speed) and Xe-70 (variable speed) controllers feature an easy-to-use interface with a high-resolution color display

Proven Reliability. Robust Design.

The R-Series 4-11 kW family of compressors delivers optimum performance and easier maintenance, all in a robust, innovative package.



Vertically-stacked drive components reduce overall footprint by 20%.



The all-in-one CE55X air end features improved air/oil separation and reliability.

Compact Productivity

- **Vertically-stacked drive components** with air end mounted above the main motor reduce overall footprint, improve balance and simplify belt tensioning
- **Common platform** allows for use of the same consumables for both fixed speed and variable speed drives (VSD)
- **Quiet operation (69 dB(A))** complements the small footprint for installation and operation within limited workspaces

Reliable, Precise Operation

- **New airend with integrated separation system** provides air/oil separation (<5 ppm) for peak air quality
- **Upgrades to PTFE hoses with O-ring face seals and fewer components** reduce the potential for leaks and increase reliability
- **Danfoss drive (VSD models)** provides world class reliability, eliminating overheating and related component failures

- **TEFC, Tri-Voltage (208-230/460 V)** improves reliability and application flexibility in fixed-speed machines
- **IE3 energy-efficient fixed and variable speed motors** support continuous operation up to 46°C (115°F)
- **Improved cooler** design minimizes thermal expansion effects

Convenient Choices for a Complete Air Solution

TAS – The Total Package

To provide the most comprehensive air solution, our Ingersoll Rand R-Series compressors are available with a Total Air System (TAS) option. These complete compressor, cooler and dryer systems come with integrated controls, water separators, drain ports, filters and receiver tanks. For any capacity you need, let Ingersoll Rand provide the complete answer in a compact solution that fits your air requirements and your workspace!

- **High-efficiency and general purpose filters (with integrated dryer)** deliver ISO 1-5-1 quality air
- **3-in-1 heat exchanger** provides increased reliability and efficiency
- **Class-leading dryer design with proven reliability**, minimizes installation costs with a single-point power connection



TAS (Total Air System)

- A** 3-in-1 heat exchanger
- B** High-efficiency filters
- C** Condenser

- D** Reliable refrigerant compressor
- E** Cyclon water separator

Features Description	Fixed Speed	Variable Speed
Xe-Series 50 Controller	●	
Xe-Series 70 Controller	○	●
Total Air System (TAS) with integrated dryer	○	○
Power outage restart	○	○
Frost protection	○	
Outdoor modification enclosure	○	
Ultra FG or Ultra EL coolant	○	○
Hi-dust air filter	○	
Low voltage (208-230 V)	●	○
Receiver tank size (80/120 gallon)	○	○

● Standard Feature ○ Optional Feature "Blank" Not Available

Ingersoll Rand Fixed Speed – 60 Hz Performance								
Model	Max. Pressure	Nominal Power		Capacity (FAD)*	Dimensions (Length x Width x Height)		Weight (Air-cooled)	
	psig	kW	hp	cfm	mm	in	kg	lb
R4i	110	4	5	19.44	960x690x1186.5	38x27x47	280/345	617/761
R4i TAS†	125	4	5	16.93	1156x690x1186.5	46x27x47	280/345	617/761
	145	4	5	14.27	1156x690x1186.5	46x27x47	280/345	617/761
	200	4	5	11.76	1156x690x1186.5	46x27x47	280/345	617/761
R5.5i	110	5.5	7.5	30.47	960x690x1186.5	38x27x47	280/345	617/761
R5.5i TAS†	125	5.5	7.5	27.50	1156x690x1186.5	46x27x47	280/345	617/761
	145	5.5	7.5	24.30	1156x690x1186.5	46x27x47	280/345	617/761
	200	5.5	7.5	16.76	1156x690x1186.5	46x27x47	280/345	617/761
R7.5i	110	7.5	10	39.84	960x690x1186.5	38x27x47	280/345	617/761
R7.5i TAS†	125	7.5	10	36.70	1156x690x1186.5	46x27x47	280/345	617/761
	145	7.5	10	33.40	1156x690x1186.5	46x27x47	280/345	617/761
	200	7.5	10	25.30	1156x690x1186.5	46x27x47	280/345	617/761
R11i	110	11	15	57.46	960x690x1186.5	38x27x47	295/365	650/805
R11i TAS†	125	11	15	53.90	1156x690x1186.5	46x27x47	295/365	650/805
	145	11	15	50.40	1156x690x1186.5	46x27x47	295/365	650/805
	200	11	15	41.46	1156x690x1186.5	46x27x47	295/365	650/805

Ingersoll Rand Variable Speed – 60 Hz Performance								
Model	Max. Pressure	Nominal Power		Capacity (FAD) @ 145 psi	Dimensions (Length x Width x Height)		Weight (Air-cooled)	
	psig	kW	hp	cfm	mm	in	kg	lb
R5.5n	65-145	5.5	7.5	8.1 - 24.3	960x690x1186.5	38x27x47	285	628
R7.5n	65-145	7.5	10	11.7 - 33.4	960x690x1186.5	38x27x47	285	628
R11n	65-145	11	15	18.4 - 50.4	960x690x1186.5	38x27x47	305	672
R5.5n TAS†	65-135	5.5	7.5	8.1 - 24.3	960x690x1186.5	38x27x47	350	772
R7.5n TAS†	65-135	7.5	10	11.7 - 33.4	960x690x1186.5	38x27x47	350	772
R11n TAS†	65-135	11	15	18.4 - 50.4	960x690x1186.5	38x27x47	375	827
Receiver Tank	Length mm		Width		Height		Additional Mass	
	mm	in	mm	in	mm	in	kg	lb
80 gal Tank-mounted Version	1783	70.0	690	27.0	1,704	67.0	120	264.5
120 gal Tank-mounted Version	1897	75.0	690	27.0	1,832	72.0	142	313.0

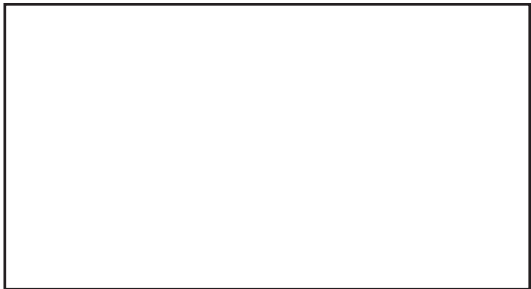
*FAD (Free Air Delivery) is full package performance including all losses. Tested per ISO 1217 : 2009 Annex C. and is measured at 10 psi lower than maximum pressure on non-TAS units and at maximum pressure on TAS equipped units.

†TAS units deliver ISO Class 1-5-1 quality air measured at steady state conditions in accordance with ISO 8573-1:2001 that dictates inlet air to package of 25°C (77°F) and relative humidity of 60%.



ingersollrandproducts.com

Ingersoll Rand (NYSE:IR) advances the quality of life by creating comfortable, sustainable and efficient environments. Our people and our family of brands—including Club Car®, Ingersoll Rand®, Thermo King® and Trane®—work together to enhance the quality and comfort of air in homes and buildings; transport and protect food and perishables; and increase industrial productivity and efficiency. We are a \$12 billion global business committed to a world of sustainable progress and enduring results.



Ingersoll Rand, IR, the IR logo are trademarks of Ingersoll Rand, its subsidiaries and/or affiliates.

Ingersoll Rand compressors are not designed, intended or approved for breathing air applications. Ingersoll Rand does not approve specialized equipment for breathing air applications and assumes no responsibility or liability for compressors used for breathing air service. R-Series compressors are intended for compressed air applications only. Ingersoll Rand assumes no responsibility or liability for compressors used in any application other than compressed air. Nothing contained on these pages is intended to extend any warranty or representation, expressed or implied, regarding the product described herein. Any such warranties or other terms and conditions of sale of products shall be in accordance with Ingersoll Rand's standard terms and conditions of sale for such products, which are available upon request. Product improvement is a continuing goal at Ingersoll Rand. Designs, available functions and specifications are subject to change without notice or obligation.